

www.PolyBushings.com

Performance Products for Dodge
Plymouth, Shelby and Dodge Pickups



- [Home](#)
- [How to Purchase?](#)
- [Poly Engine Mounts](#)
- [Poly Suspension Bushings](#)
- [Poly "T" Bushings By Size](#)
- [Anti-Sway Bars](#)
- [Tech Help!](#)
- [Bushings Lube](#)
- [Contact Info](#)
- [Tips To Make Your Car Handle](#)
- [Links](#)

Polyurethane Heavy Duty Engine Mounts For 1989-1993 Dodge Pickup with Cummins Diesel Engine

#2710 (Will also fit the Dodge Viper, from 1992 thru 2010)

They are an internal locking mount where the factory ones had an external safety lock.

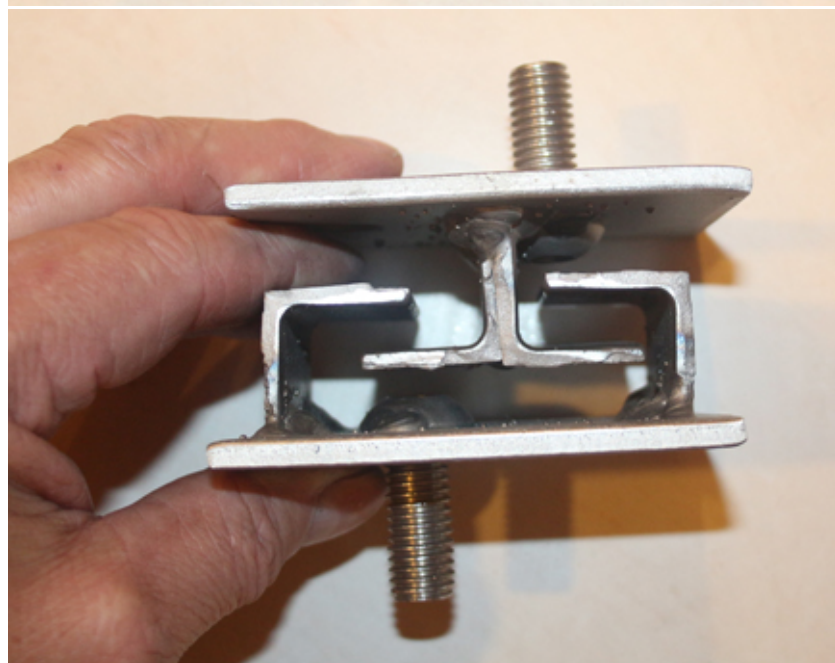
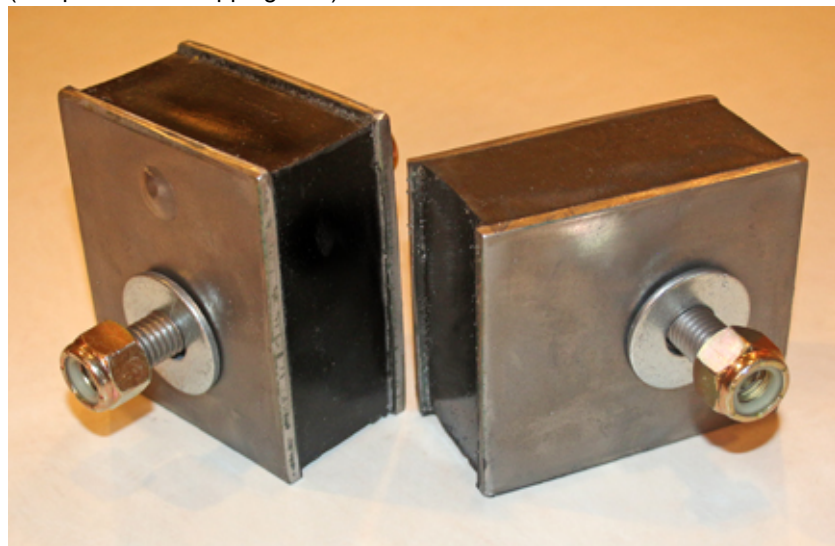
Lower photo shows the way the locking system works inside the mount.

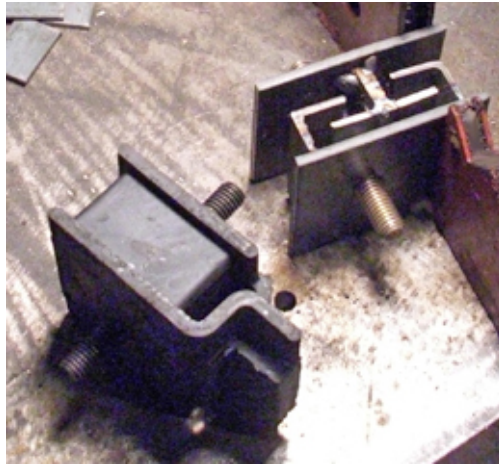
Fits all Dodge pickups equipped with the Cummins engine, from 1989 to 1993.

For those looking for mounts to fit a project build, these are 3"x3-1/2" and 1-3/4" thick.

NOW IN STAINLESS STEEL!

Priced at \$149 Pair plus \$16 shipping
(two pair is \$16 shipping also)





On the left is the stock piece, on the right shows the PolyBushing.com mount before the poly is added.

Contact Johnny at (541) 266-0890 or e-mail at glhs289@hotmail.com

