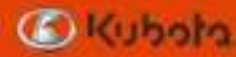


BX1880 - BX2680



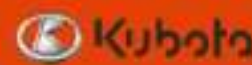
COMPETITIVE COMPARISON								
MODEL		Kubota BX1880	Mahindra eMax 22S HST	John Deere BX2380	Kubota BX2380	John Deere 1025R	Mahindra eMax 25S HST	Kubota BX2680
Engine	Manufacturer	Kubota	Daedong	Yanmar	Kubota	Yanmar	Daedong	Kubota
	Type	Diesel	Diesel	Diesel	Diesel	Diesel	Diesel	Diesel
	Gross Engine (*SAE J1995) HP (kw)	18.0 (13.4)*	22 (16.4)	22.4 (16.5)	23.0 (17.1)*	23.9 (17.8)	24 (17.9)	25.5 (19.0)*
	PTO (*OECD 2) HP (kw)	13.7 (10.2)*	14.9 (11.1)	14.5 (10.8)	17.7 (13.2)*	18 (13.4)	16.9 (12.6)	19.5 (14.5)*
	Rated Engine Speed rpm	3200	3000	3200	3200	3200	3000	3200
	Cylinders/Displacement cu.in. (liters)	3 / 43.9 (.719)	3 / 61.5 (1.007)	3 / 60.6 (.993)	3 / 54.8 (.898)	3 / 77.3 (1.267)	3 / 61.5 (1.007)	3 / 61.1 (1.001)
	Engine Torque @ rated speed ft./lb.	32.1	N/P	36.3	40	40.7	N/P	44.4
	Fuel Tank Cap US Gal. (L)	6.6 (25)	5.8 (21.96)	5.6 (21.2)	6.6 (25)	5.6 (21.2)	5.8 (21.96)	6.6 (25)
Electrical	Battery Size (CCA)	560	12V 50AH	500	560	500	12V 50AH	560
	Alternator (12 volt, amp)	40	50	40	40	40	50	40
Transmission	Std. Transmission; Forward/Reverse	Hydrostatic - 2 Range	Hydrostatic - 2 Range	Hydrostatic - 2 Range	Hydrostatic - 2 Range	Hydrostatic - 2 Range	Hydrostatic - 2 Range	Hydrostatic - 2 Range
	Brakes	Multi wet disc	Wet disc	Wet disc hand pedal) (left	Multi wet disc	Wet disc hand pedal) (left	Wet disc	Wet disc
	Steering	Power	Power	Power	Power	Power	Power	Power
	Axle Capacity Front, lb. (kg) Rear, lb. (kg)	1630 (740) 2120 (960)	N/P N/P	1349 (612) 1576 (715)	1630 (740) 2120 (960)	1349 (612) 1576 (715)	N/P N/P	1630 (740) 2120 (960)
Hydraulics	Remote Control Valves Available	2	1	2	2	2	1	2
3-point Hitch	Type	Category 1	Category 1	Limited Category 1	Category 1	Limited Category 1	Category 1	Category 1
	Lift Capacity (24-in. behind link arms) lb. (kg)	680 (310)	N/P	681 (309)	680 (310)	681 (309)	N/P	680 (310)
	Lift Capacity @ lift links ends lb. (kg)	1210 (550)	1320 (599)	N/P	1210 (550)	N/P	1320 (599)	1210 (550)
Power Take-Off (PTO)	Standard	Rear 540/Mid 2500	Rear 540/Mid 2000	Rear 540/Mid 2100	Rear 540/Mid 2500	Rear 540/Mid 2100	Rear 540/Mid 2000	Rear 540/Mid 2500
	Control	Independent	Independent	Independent	Independent	Independent	Independent	Independent
	Clutch	Wet hydraulic	N/P	Wet disc	Wet hydraulic	Wet disc	N/P	Wet hydraulic
Operator Station	Rollover Protective Structure	Yes	Yes	Yes	Yes	Yes	Yes	Yes
	Rigid- Foldable - Telescopic	Foldable	Foldable	Foldable	Foldable	Foldable	Foldable	Foldable
	Platform - Flat/Straddle	Flat	Straddle	One-piece semi flat	Flat	One-piece semi flat	Straddle	Flat
Dimensions	Wheelbase in. (mm)	55.1 (1400)	N/P	57.1 (1450)	55.1 (1400)	57.1 (1450)	N/P	55.1 (1400)
	Front Tread	36.6 (930)	N/P	36.1 (918)	36.6 (930)	36.1 (918)	N/P	36.6 (930)
	Turning Radius w/o Brakes ft. (m)	7.5 (2.3)	7.2 (2.2)	7.4 (2.25)	7.5 (2.3)	7.4 (2.25)	7.2 (2.2)	7.5 (2.3)
	Tractor Weight	1336 (606)	1540 (698.5)	1345 (610)	1443 (650)	1444 (665)	1540 (698.5)	1521 (670)
Standard Tires	Front	16x7.5-8 ; Turf	20x8.0-10 ; Turf	18x8.5-10 ; R4	18x8.5-10 ; Turf	18x8.5-10 ; R4	20x8.0-10 ; Turf	18x8.5-10 ; Turf
	Rear	24x12-12 ; Turf	29x12.5-15 ; Turf	26X12-12 ; R4	26x12.0-12 ; Turf	18x8.5-10 ; R4	29x12.5-15 ; Turf	26x12.0-12 ; Turf

N/A - Not Available N/P - Not Published

Kubota Tractor Corporation reserves the right to change the stated specifications without notice. This brochure is for descriptive purposes only and reasonable efforts were used to set forth the contained information; some items shown may be optional and some products shown may not be available at all dealerships. Kubota disclaims all representations and warranties, express or implied, or any liability from the use of this brochure. For complete warranty, safety and product information, consult your local Kubota dealer and the operator's manual. Power (HP/KW) and other specifications are based on various standards or recommended practices. For your safety, Kubota strongly recommends the use of a Rollover Protective Structure (ROPS) and seat belt in almost all applications. This brochure is intended for the United States and US territories only. For information regarding Kubota products or services outside these areas, see Kubota Corporation's global web site. Kubota does not provide parts, warranty or service for any Product which is re-sold or retailed in any country other than the country for which the Product(s) were designed or manufactured.

Kubota Tractor

BX1880 - BX2680 Implements



COMPETITIVE COMPARISON									
MODEL			Kubota BX1880		Kubota BX2380 - BX2680		John Deere 1023E - 1025R		Mahindra eMax 22S - eMax 25S
LOADER			LA344	LA344S	LA344	LA344S	D120	120R	eMax 25L-S
LOADER	Lift Capacity (Pivot Pin, Max. Height)	lb.	739	613	739	613	825	754	900
	Lift Capacity (500mm Forward Pivot Pin, Max. Height)	lb.	509	423	509	423	570	520	N/P
	Lift Height (Pivot Pin)	in.	70.7		71.0		71.2	72.0	75.3
	Reach at Maximum Height	in.	25.3	26.5	25.4	26.7	22.5	24.7	24.9
	Boom Breakout Force (Pivot Pin)	ft.lb	1407	1286	1407	1286	1808	1823	2000
	Boom Breakout Force (500mm Forward Pivot Pin)	ft.lb	978	901	978	901	1238	1320	N/P
	Digging Depth at Bucket Level	in.	5.3	5.2	4.9	4.8	4.0	3.2	4.1
	Cycle Times - Loader Raise	sec.	3.3		3.3		4	3.2	4.4
	Cycle Times - Loader Lower	sec.	2.5		2.5		2.5	3.2	2.5
	Cycle Times - Bucket Dump	sec.	2.7		2.7		5.7	3.1	5.3
	Cycle Times - Bucket Rollback	sec.	2.3		2.3		3.5	2.2	3.8
	Bucket Angle - Dump Angle	degrees	45		45		40.1	40.5	38.0
	Bucket Angle - Rollback Angle	degrees	30		29		31.2	29.87	20
	Universal 2-Lever Quick Attach Coupler		Optional	Standard	Optional	Standard	N/A		N/A
	Quick Attach Loader		Standard		Standard		Standard		Standard
Third Function Valve		Optional		Optional		N/A		N/A	
Factory Pallet Forks		Available		Available		N/A		N/A	

N/A = Not Available N/P = Not Published

* Non Self Leveling Loader

Kubota Tractor Corporation reserves the right to change the stated specifications without notice. This brochure is for descriptive purposes only and reasonable efforts were used to set forth the contained information; some items shown may be optional and some products shown may not be available at all dealerships. Kubota disclaims all representations and warranties, express or implied, or any liability from the use of this brochure. For complete warranty, safety and product information, consult your local Kubota dealer and the operator's manual. Power (HP/KW) and other specifications are based on various standards or recommended practices. For your safety, Kubota strongly recommends the use of a Rollover Protective Structure (ROPS) and seat belt in almost all applications. This brochure is intended for the United States and US territories only. For information regarding Kubota products or services outside these areas, see Kubota Corporation's global web site. Kubota does not provide parts, warranty or service for any Product which is re-sold or retailed in any country other than the country for which the Product(s) were designed or manufactured.



COMPETITIVE COMPARISON

MODEL		Kubota BX23S	John Deere 1025R - TLB	Mahindra eMax 25S HST TLB
Engine	Manufacturer	Kubota	Yanmar	Daedong
	Type	Diesel	Diesel	Diesel
	Gross Engine (*SAE J1995) HP (kw)	23.0 (17.2)*	23.9 (17.8)	24 (17.9)
	PTO (*OECD 2) HP (kw)	17.7 (13.2)*	18 (13.4)	16.9 (12.6)
	Rated Engine Speed rpm	3200	3200	3000
	Cylinders/Displacement cu.in. (liters)	3 / 54.8 (.898)	3 / 77.3 (1.267)	3 / 61.5 (1.007)
	Engine Torque @ rated speed ft./lb.	40	40.7	N/P
	Fuel Tank Cap US Gal. (L)	6.6 (25)	5.6 (21.2)	5.8 (21.96)
Electrical	Battery Size (CCA)	560	500	12V 50AH
	Alternator (12 volt, amp)	40	40	50
Transmission	Std. Transmission; Forward/Reverse	Hydrostatic - 2 Range	Hydrostatic - 2 Range	Hydrostatic - 2 Range
	Brakes	Wet disc	Wet disc (left hand pedal)	Wet disc
	Steering	Power	Power	Power
	Axle Capacity Front, lb. (kg) Rear, lb. (kg)	1630 (740) 2120 (960)	1349 (612) 1576 (715)	N/P N/P
Hydraulics	Remote Control Valves Available	N/A	N/A	N/P
3-point Hitch	Type	Optional	Limited Category 1	Category 1
	Lift Capacity (24-in. behind link arms) lb. (kg)	680 (310)	681 (309)	N/P
	Lift Capacity @ lift links ends lb. (kg)	1210 (550)	N/P	1320 (599)
Power Take-Off (PTO)	Standard	Rear 540/Mid 2500	Rear 540/Mid 2100	Rear 540/Mid 2000
	Control	Independent	Independent	Independent
	Clutch	Wet hydraulic	Wet disc	N/P
Operator Station	Rollover Protective Structure	Yes	Yes	Yes
	Rigid- Foldable - Telescopic	Foldable	Foldable	Foldable
	Platform - Flat/Straddle	Flat	One-piece semi flat	Straddle
Dimensions	Wheelbase in. (mm)	55.1 (1400)	57.1 (1450)	N/P
	Front Tread	36.6 (930)	36.1 (918)	N/P
	Front Axle Clearance in. (mm)	8.9 (225)	7.7 (195)	N/P
	Turning Radius w/o Brakes ft. (m)	7.5 (2.3)	7.4 (2.25)	7.2 (2.2)
	TLB Weight	2689 (1220)	2208 (1002), Excludes Loader Frame	2757 (1251)
Standard Tires	Front	18x8.5-10 ; Turf	18x8.5-10 ; R4	20x8.0-10 ; Turf
	Rear	26x12.0-12 ; Turf	18x8.5-10 ; R4	29x12.5-15 ; Turf

N/A = Not Available N/P = Not Published

Kubota Tractor Corporation reserves the right to change the stated specifications without notice. This brochure is for descriptive purposes only and reasonable efforts were used to set forth the contained information; some items shown may be optional and some products shown may not be available at all dealerships. Kubota disclaims all representations and warranties, express or implied, or any liability from the use of this brochure. For complete warranty, safety and product information, consult your local Kubota dealer and the operator's manual. Power (HP/KW) and other specifications are based on various standards or recommended practices. For your safety, Kubota strongly recommends the use of a Rollover Protective Structure (ROPS) and seat belt in almost all applications. This brochure is intended for the United States and US territories only. For information regarding Kubota products or services outside these areas, see Kubota Corporation's global web site. Kubota does not provide parts, warranty or service for any Product which is re-sold or retailed in any country other than the country for which the Product(s) were designed or manufactured.

BX23S Implements



COMPETITIVE COMPARISON						
MODEL			Kubota BX23S		John Deere 1025R	Mahindra eMax 25S HST
LOADER			LA340 Pin-on	LA340 Quick Attach	120R Loader	eMax 25L-S
LOADER	Lift Capacity (Pivot Pin, Max. Height)	lb.	739	613	754	900
	Lift Capacity (500mm Forward Pivot Pin, Max. Height)	lb.	509	423	520	N/P
	Lift Height (Pivot Pin)	in.	71		72.0	75.3
	Reach with Bucket on Ground	in.	54.8	56.6	46.7	N/P
	Boom Breakout Force (Pivot Pin)	ft.lb	1407	1286	1823	2000
	Boom Breakout Force (500mm Forward Pivot Pin)	ft.lb	987	901	1320	N/P
	Digging Depth at Bucket Level	in.	4.9	4.8	3.2	4.1
	Cycle Times - Loader Raise	sec.	3.3		3.2	4.4
	Cycle Times - Loader Lower	sec.	2.5		3.2	2.5
	Cycle Times - Bucket Dump	sec.	2.3		3.1	5.3
	Cycle Times - Bucket Rollback	sec.	2.7		2.2	3.8
	Bucket Angle - Dump Angle	degrees	45		41	38.0
	Bucket Angle - Rollback Angle	degrees	29		29.87	20
	2-Lever Quick Attach Coupler		Optional	Standard	N/A	N/A
	Quick Attach Loader		Standard		Standard	Standard
	Third Function Valve		Optional		N/A	N/A
	Factory Pallet Forks		Available		N/A	N/A
MODEL			Kubota BX23S BT603 Backhoe		John Deere 1025R 260 Backhoe	Mahindra eMax 25S HST eMax 26B
BACKHOE	Digging Depth at 2' flat bottom	ft.	6 ft. 5 in.		6 ft. 2 in.	6 ft. 2.9 in.
	Swing Arc	degrees	140.0		150.0	150.0
	Bucket Cylinder Digging Force	lb.	1936		2036	2145
	Dipperstick Cylinder Digging Force	lb.	1171		1187	903
	Loading Height	ft.	5 ft. 4 in.		5 ft.	5 ft. 2 in.
	Reach from Swing Point	in.	102.8		105.6	102.0
	6-Positional Mechanical Thumb		Optional		Optional	Optional

N/A = Not Available N/P = Not Published

* Non Self Leveling Loader

Kubota Tractor Corporation reserves the right to change the stated specifications without notice. This brochure is for descriptive purposes only and reasonable efforts were used to set forth the contained information; some items shown may be optional and some products shown may not be available at all dealerships. Kubota disclaims all representations and warranties, express or implied, or any liability from the use of this brochure. For complete warranty, safety and product information, consult your local Kubota dealer and the operator's manual. Power (HP/KW) and other specifications are based on various standards or recommended practices. For your safety, Kubota strongly recommends the use of a Rollover Protective Structure (ROPS) and seat belt in almost all applications. This brochure is intended for the United States and US territories only. For information regarding Kubota products or services outside these areas, see Kubota Corporation's global web site. Kubota does not provide parts, warranty or service for any Product which is re-sold or retailed in any country other than the country for which the Product(s) were designed or manufactured.