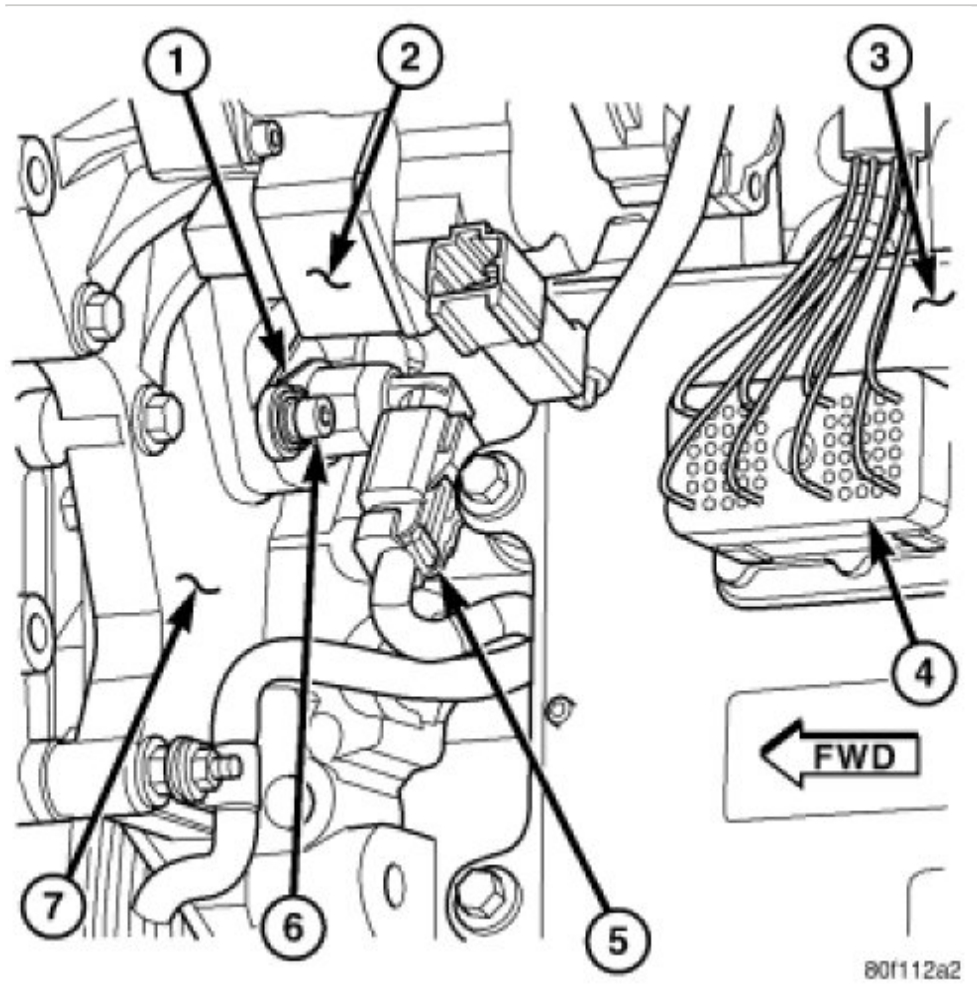


CAMSHAFT POSITION SENSOR - INSTALLATION

5.9L/6.7L DIESEL



The CMP (1) is located on the back of the timing gear cover.

1. Clean out machined hole in back of timing gear cover.
2. Apply a small amount of engine oil to sensor o-ring.
3. Install sensor into timing gear cover with a slight rocking action. Do not twist sensor into position as damage to o-ring may result.

CAUTION: Before tightening sensor mounting bolt, be sure sensor is completely flush to back of timing chain cover. If sensor is not flush, damage to sensor mounting tang may result.

4. Install mounting bolt and tighten to 12 Nm (106 in.lbs.).
5. Connect electrical connector to sensor.

