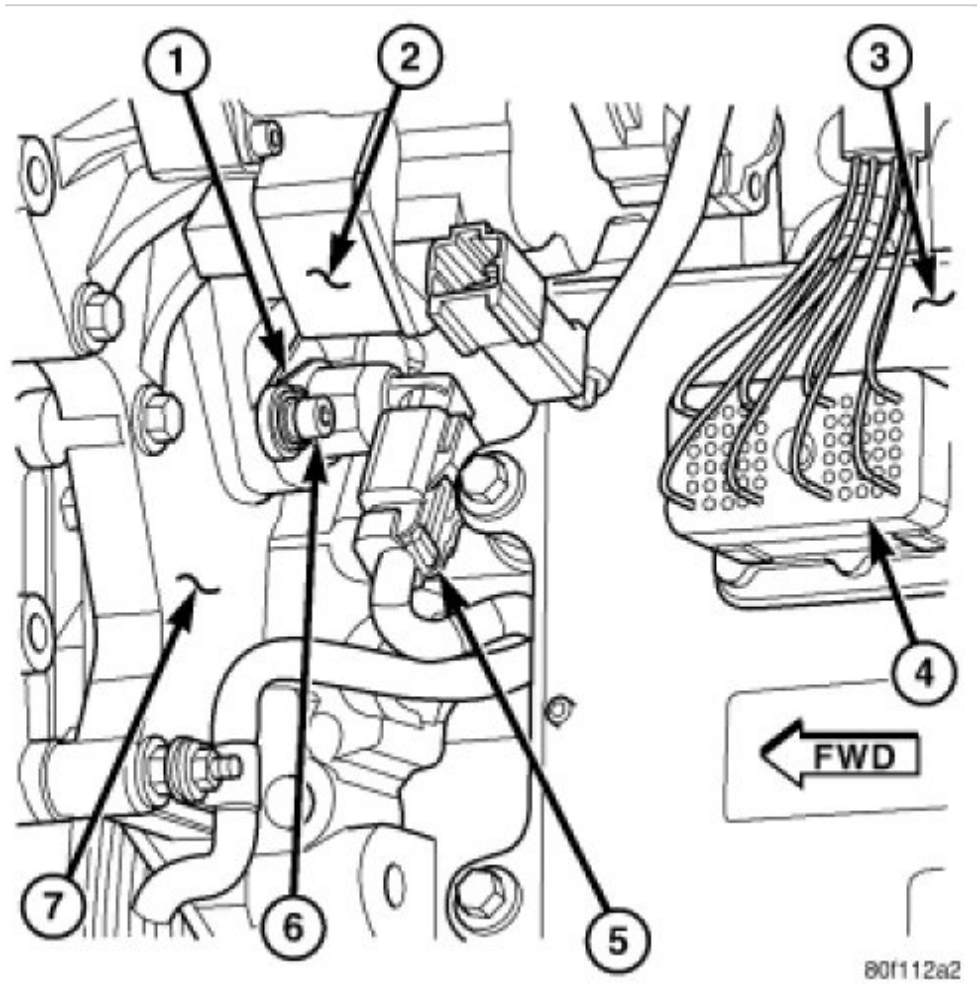


CAMSHAFT POSITION SENSOR - REMOVAL

5.9L/6.7L DIESEL



The Camshaft Position Sensor (CMP) on the diesel engine is located below the fuel injection pump (1). It is bolted to the back of the timing gear cover.

1. Disconnect electrical connector (5) at CMP sensor.
2. Remove sensor mounting bolt (6).
3. Carefully twist sensor from timing gear cover.
4. Check condition of sensor o-ring.