

2004 Dodge or Ram Truck RAM 2500 Truck 4WD L6-5.9L DSL Turbo VIN 6

Vehicle > Transmission and Drivetrain > Automatic Transmission/Transaxle > Adjustments > 48RE (A-618) 4 Speed

THROTTLE VALVE CABLE

ADJUSTMENTS - THROTTLE VALVE CABLE

A correctly adjusted throttle valve cable will cause the throttle lever on the transmission to move simultaneously with the throttle body lever from the idle position. Proper adjustment will allow simultaneous movement without causing the transmission throttle lever to either move ahead of, or lag behind the lever on the throttle body

ADJUSTMENT VERIFICATION

1. Turn ignition key to OFF position.
2. Remove air cleaner.

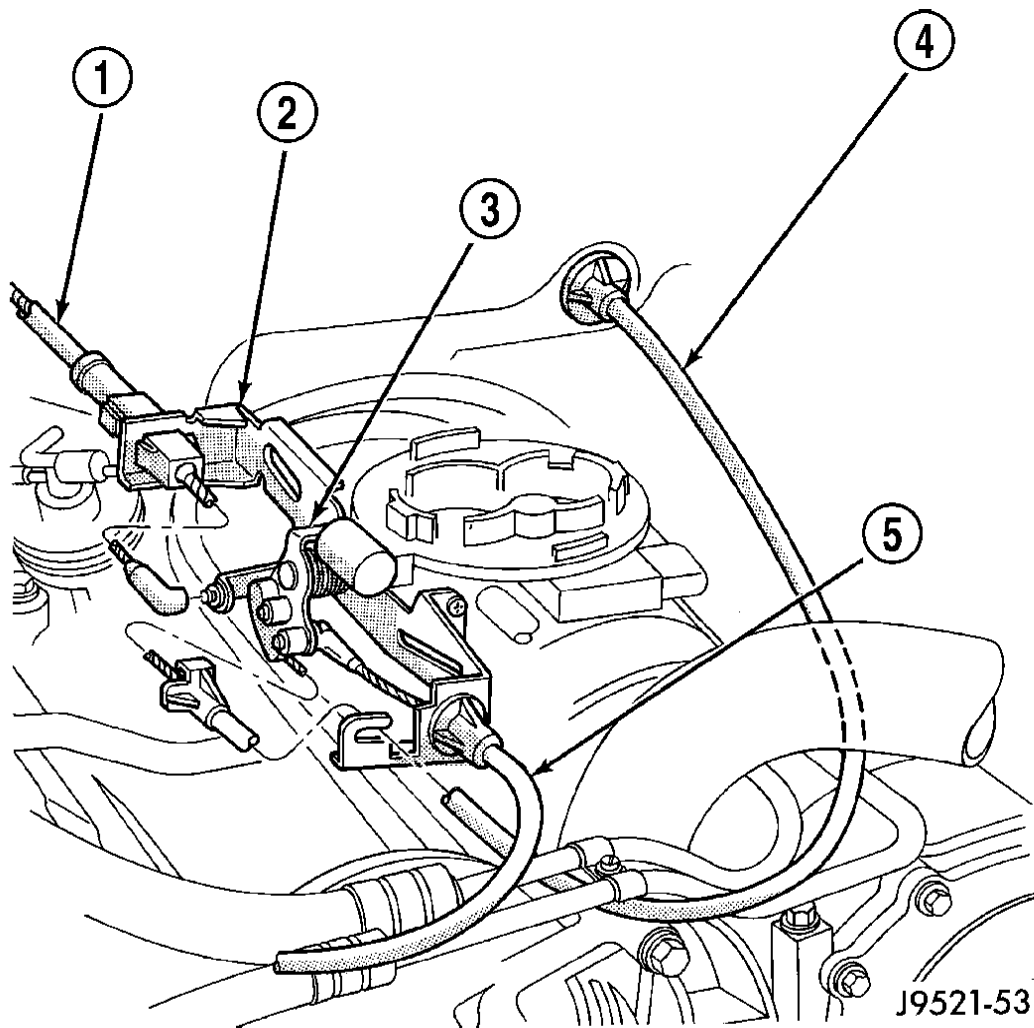


Fig. 230 Throttle Valve Cable Attachment - At Engine

- 1 - THROTTLE VALVE CABLE
- 2 - CABLE BRACKET
- 3 - THROTTLE BODY LEVER
- 4 - ACCELERATOR CABLE
- 5 - SPEED CONTROL CABLE

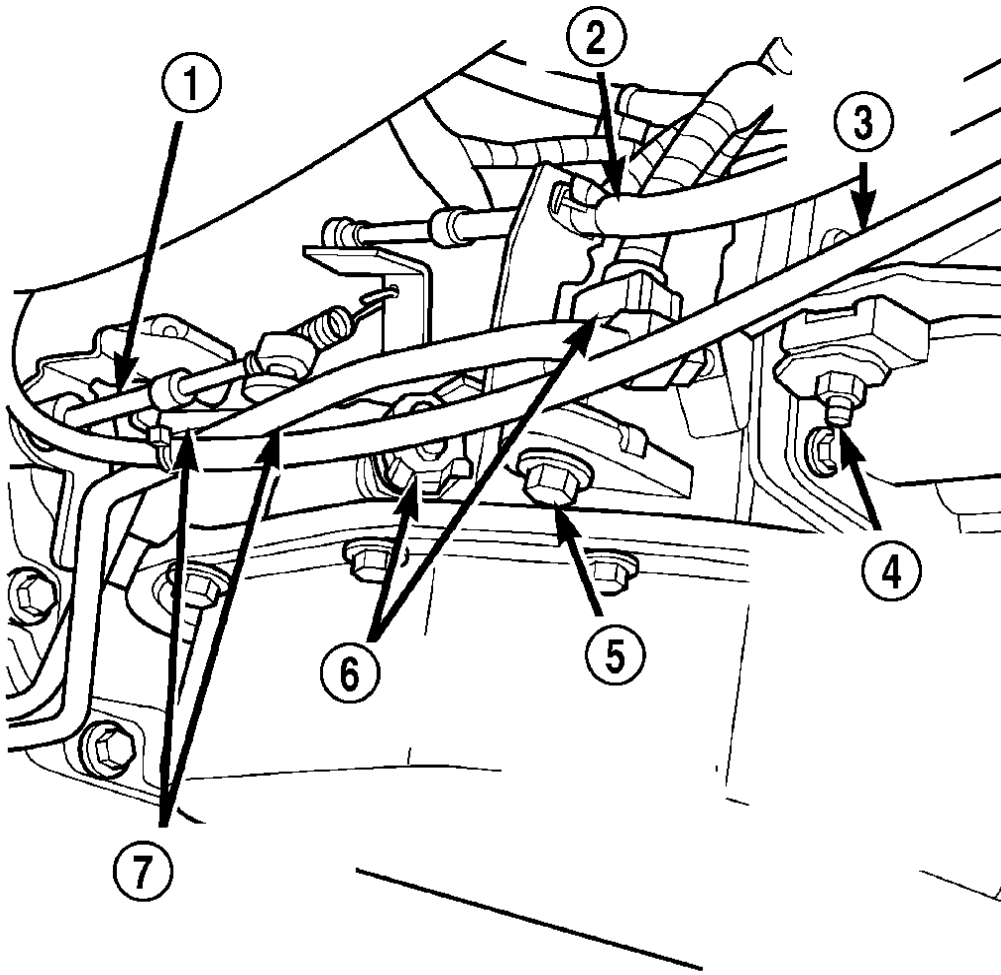
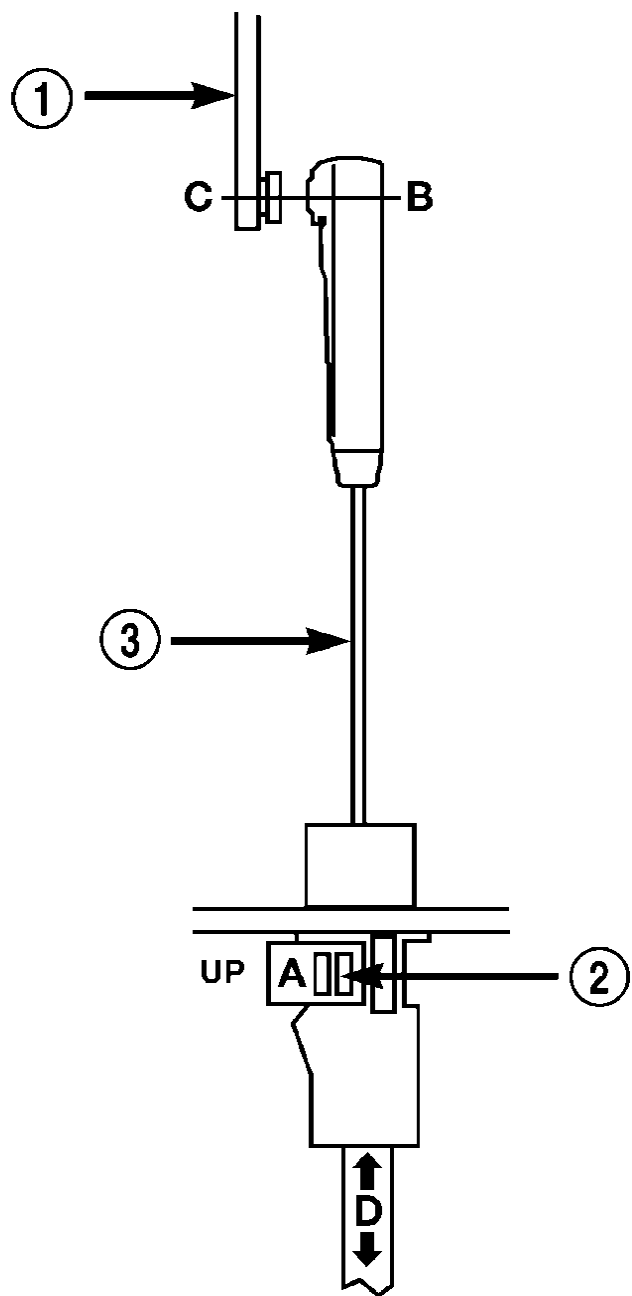


Fig. 231 Throttle Valve Cable at Transmission

- 1 - TRANSMISSION SHIFTER CABLE
- 2 - THROTTLE VALVE CABLE
- 3 - TRANSFER CASE SHIFTER CABLE
- 4 - TRANSFER CASE SHIFTER CABLE BRACKET RETAINING BOLT (1 OR 2)
- 5 - THROTTLE VALVE CABLE BRACKET RETAINING BOLT
- 6 - ELECTRICAL CONNECTORS
- 7 - TRANSMISSION FLUID LINES

3. Verify that lever on throttle body is at curb idle position (Fig. 230). Then verify that the transmission throttle lever (Fig. 231) is also at idle (fully forward) position.

4. Slide cable off attachment stud on throttle body lever.



80bce9fb

Fig. 232 Throttle Valve Cable at Throttle Linkage

- 1 - THROTTLE LINKAGE
- 2 - THROTTLE VALVE CABLE LOCKING CLIP
- 3 - THROTTLE VALVE CABLE

5. Compare position of cable end to attachment stud on throttle body lever:

- Cable end and attachment stud should be aligned (or centered on one another) to within **1 mm (0.039 inch)** in either direction (Fig. 232).
- If cable end and attachment stud are misaligned (off center), cable will have to be adjusted as described in Throttle Valve Cable Adjustment procedure.

6. Reconnect cable end to attachment stud. Then with aid of a helper, observe movement of transmission throttle lever and lever on throttle body
- If both levers move simultaneously from idle to half-throttle and back to idle position, adjustment is correct.
 - If transmission throttle lever moves ahead of, or lags behind throttle body lever, cable adjustment will be necessary. Or, if throttle body lever prevents transmission lever from returning to closed position, cable adjustment will be necessary.

ADJUSTMENT PROCEDURE

1. Turn ignition switch to OFF position.
2. Remove air cleaner if necessary.
3. Disconnect cable end from attachment stud. Carefully slide cable off stud. Do not pry or pull cable off.
4. Verify that transmission throttle lever is in fully closed position. Then be sure lever on throttle body is at curb idle position.
5. Pry the T.V. cable lock (A) into the UP position (Fig. 232). This will unlock the cable and allow for readjustment.
6. Apply just enough tension on the T.V. cable (B) to remove any slack in the cable. Pulling too tight will cause the T.V. lever on the transmission to move out of its idle position, which will result in an incorrect T.V. cable adjustment. Slide the sheath of the TV cable (D) back and forth until the centerlines of the TV cable end (B) and the throttle bell crank lever (C) are aligned within **one millimeter (1 mm)** (Fig. 232).
7. While holding the TV cable in the set position push the TV cable lock (A) into the down position (Fig. 232). This will lock the present TV cable adjustment.

NOTE: Be sure that as the cable is pulled forward and centered on the throttle lever stud, the cable housing moves smoothly with the cable. Due to the angle at which the cable housing enters the spring housing, the cable housing may bind slightly and create an incorrect adjustment.

8. Reconnect the TV cable (B) to the throttle bellcrank lever (C).
9. Check cable adjustment. Verify transmission throttle lever and lever on throttle body move simultaneously.